

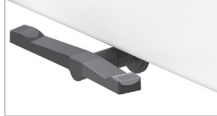
CASTER/BRAKE OPTIONS

(4) Locking Casters
(no upcharge)



Specify black or grey.

Central Brake
\$1085



Central brake with directional steering casters. Specify black or grey casters.

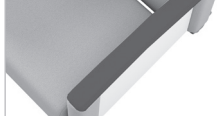
ARM CAP OPTIONS

Solid Surface
\$475



Specify solid surface color.

Urethane Cap
(no upcharge)



Standard. Specify black, sable or dove.

ARM PANEL OPTIONS

Solid Surface
\$746 per chair



Specify solid surface color.

Thermoform
(no upcharge)



Standard. Specify thermoform color.

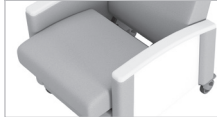
ACCESSORIES

Transfer Arm
\$814 per arm



Specify right, left or both (as facing). Not available right side when flip table is specified.

Quick Release Seat
(14900-QR) \$272

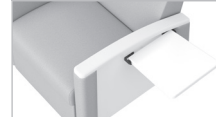


Full Flip Table
(14900-FT)



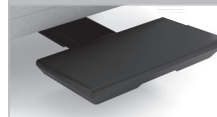
Available right side only (as facing). Specify color.
Thermoform \$475
Solid Surface \$951

Half Flip Table
(14900-FTP)



Available right side only (as facing). Specify color.
Thermoform \$475
Solid Surface \$951

Footrest (14900-FR)
\$483



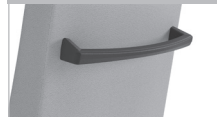
Black only.

Foley Bag Hook
(14900-BH) \$69



Available right side only (as facing). Not available when Full Flip Table is specified. Available with transfer arms.

Pushbar
(14900-PB) \$299



Urethane only. Specify black, sable or dove.



14981 AMARI RECLINER

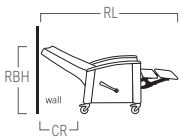
W: 29" D: 34.25" H: 46.75" SW: 22" SD: 20.75" SH: 20" AH: 26.75" WT: 113 lb COM: 4 yd WT CAP: 500 lb

ZONE	B/COM	C	D	E	F	G	H	I	J	GENERAL INFORMATION
1	5729	5809	5885	5981	6141	6297	6457	6613	6773	MATERIAL: Varies MOIS. BARR: Included
2	5871	5951	6027	6123	6283	6439	6599	6755	6915	
3	6012	6092	6168	6264	6424	6580	6740	6896	7056	
4	6154	6234	6310	6406	6566	6722	6882	7038	7198	

14W981 AMARI RECLINER, WIDE

W: 32" D: 34.25" H: 46.75" SW: 25" SD: 20.75" SH: 20" AH: 26.75" WT: 125 lb COM: 4.25 yd WT CAP: 500 lb

ZONE	B/COM	C	D	E	F	G	H	I	J	GENERAL INFORMATION
1	6144	6229	6310	6412	6582	6748	6918	7083	7253	MATERIAL: Varies MOIS. BARR: Included
2	6296	6381	6462	6564	6734	6900	7070	7235	7405	
3	6448	6533	6614	6716	6886	7052	7222	7387	7557	
4	6600	6685	6766	6868	7038	7204	7374	7539	7709	



RL- Reclined length 70.5"

RBH- Reclined back height 34.5"

CR- Clearance required when placed against a wall is 20.5".

A 12.5" clearance is required from edge of chair when optional table is extended.

Specify:

- Product Number
- Fabric Vendor, Pattern and Color
- Urethane Color
- Thermoform Color
- Solid Surface Color
- Caster Color