



allay®

**WIELAND**  
healthcare





## keep families close

The award-winning Allay sleep sofa encourages families and loved ones to participate in the recovery process. With an angled seat and contoured high back, daytime sitting comfort is unparalleled. The integrated pull handle visually signals to visitors how to convert to sleep position, sparing extra nurse calls.



customize to fit your family zone



### slim models fit neatly

Available in five lengths with a variety of arm styles and caps, allay is now offered in both slim and standard depth models. The new slim option is an ideal solution for tighter areas, avoiding door swing conflicts when family zone alcoves are next to outboard toilets. With unique features like a table arm, trundle bed, and ottomans, allay's simplicity and versatility truly stand out in the sleep sofa category.





## an open base makes cleaning a breeze

Infection prevention is always top-of-mind at Wieland. Generous, accessible clean outs are infused throughout the design allowing crumbs to fall freely to the floor.





## highlights

- Slim depth models are available with open or continuous base
- Straight back or integrated pull handle
- Generous clean out
- Arm caps are available in solid surface, urethane and wood
- Table arm option is available in solid surface on both standard and slim models
- Back support panel and drawer are offered in wood or thermoform
- Available in 5 lengths - 66" to 78" sleep surface
- Trundle bed option offered in thermoform and wood
- Trundle bed mattress is covered in anti-microbial nylon and is water repellent
- Power offered on table arm option
- Fully renewable
- 25 year warranty, 10 year on ottoman mechanism, 3 year on casters, 2 year on drawer glides, and 5 year on electrical
- GREENGUARD® Certified for low chemical emissions UL.COM/GG UL 2818, [greenguard.org](http://greenguard.org)

see the difference side-by-side





## models



600 series  
fully upholstered, soft  
top arm style



601 series  
upholstered, with  
arm cap arm style



600 slim series\*  
fully upholstered, soft  
top arm style



601 slim series\*  
upholstered, with  
arm cap arm style

## arm options

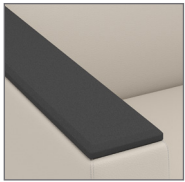


table arm  
with solid surface top

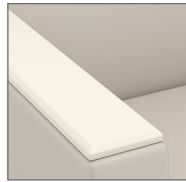
## arm cap options



wood



urethane



solid surface

## back options



pull handle

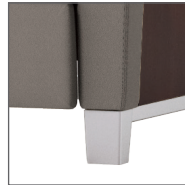


straight back

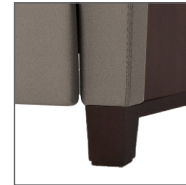
## leg styles



caster



metal  
silver or black



wood

## power options



power option  
silver or black; available as  
120V only or 120V + USB  
combo; available on 601  
models with table arm

## base options



open base



continuous  
panel



ottoman  
\*not available on slim  
models or with table  
arm option



drawer  
\*not available on  
slim models



trundle bed  
wood or thermoform,  
\*not available on  
slim models

## sleep conversion

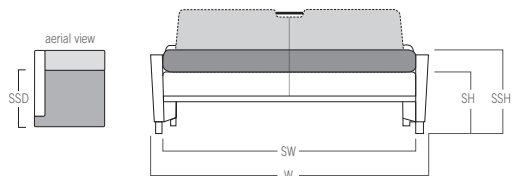




## specifications

Product No.	Description	W	D	H	SW	SD	SH	AH	WT	YDG	WT CAP
60066	600 Series, Soft Top Arm	74	34	38	66	21	18.5	23.5	171	12.75	750
60069	600 Series, Soft Top Arm	77	34	38	69	21	18.5	23.5	177	12.75	750
60072	600 Series, Soft Top Arm	80	34	38	72	21	18.5	23.5	183	12.75	750
60075	600 Series, Soft Top Arm	83	34	38	75	21	18.5	23.5	189	12.75	750
60078	600 Series, Soft Top Arm	86	34	38	78	21	18.5	23.5	195	12.75	750
60166	601 Series, Uph Arm, Arm Cap	74	34	38	66	21	18.5	23.5	175	13	750
60169	601 Series, Uph Arm, Arm Cap	77	34	38	69	21	18.5	23.5	181	13	750
60172	601 Series, Uph Arm, Arm Cap	80	34	38	72	21	18.5	23.5	187	13	750
60175	601 Series, Uph Arm, Arm Cap	83	34	38	75	21	18.5	23.5	193	13	750
60178	601 Series, Uph Arm, Arm Cap	86	34	38	78	21	18.5	23.5	195	13	750
60066S	Slim, Uph Arm, 66" Sleep Surface, 74" Wide	74	30	34	66	17	18.5	23.5	154	12.75	750
60069S	Slim, Uph Arm, 69" Sleep Surface, 77" Wide	77	30	34	69	17	18.5	23.5	160	12.75	750
60072S	Slim, Uph Arm, 72" Sleep Surface, 80" Wide	80	30	34	72	17	18.5	23.5	166	12.75	750
60075S	Slim, Uph Arm, 75" Sleep Surface, 83" Wide	83	30	34	75	17	18.5	23.5	172	12.75	750
60078S	Slim, Uph Arm, 78" Sleep Surface, 86" Wide	86	30	34	78	17	18.5	23.5	178	12.75	750
60166S	Slim, Uph Arm, Arm Cap, 66" Sleep Surface, 74" Wide	74	30	34	66	17	18.5	23.5	158	13	750
60169S	Slim, Uph Arm, Arm Cap, 69" Sleep Surface, 77" Wide	77	30	34	69	17	18.5	23.5	164	13	750
60172S	Slim, Uph Arm, Arm Cap, 72" Sleep Surface, 80" Wide	80	30	34	72	17	18.5	23.5	170	13	750
60175S	Slim, Uph Arm, Arm Cap, 75" Sleep Surface, 83" Wide	83	30	34	75	17	18.5	23.5	176	13	750
60178S	Slim, Uph Arm, Arm Cap, 78" Sleep Surface, 86" Wide	86	30	34	78	17	18.5	23.5	182	13	750

## dimensions legend



W: Overall Width  
 D: Depth  
 H: Height  
 SW: Seat Width  
 SD: Seat Depth  
 SH: Seat Height  
 SSH: Sleep Surface Height 22.5"  
 SSD: Sleep Surface Depth 30.5"  
 Slim Sleep Surface Depth 26.5"  
 AH: Arm Height  
 WT: Weight  
 YDG: Fabric Yardage

- Dynamic weight capacity 750 lbs.; static weight capacity is 400 lbs. per seat or 1200 lbs. total
- Clearance with ottoman extended is 17"
- Ottomans 14" from ground when extended
- Clearance with drawer extended is 16"
- Add 4" to the overall width if ottoman handle is included
- Clearance with trundle bed open is 28"
- Weight capacity for trundle bed 400 lbs.





**WIELAND**  
healthcare

888.WIELAND  
wielandhealthcare.com

© Sauder Manufacturing Co. All rights reserved.

HC004711216\_0525 5/2025

U.S. Patent Numbers D739,664 and 9,314,104

